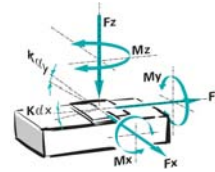


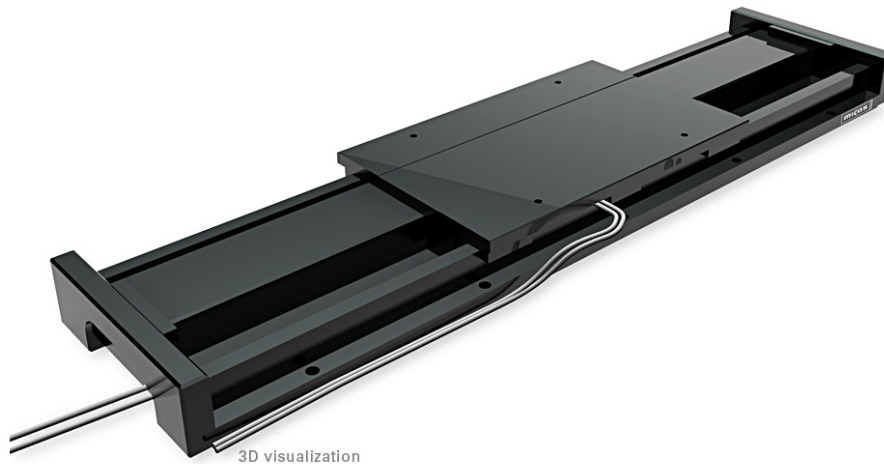
Linear Motor Stage LMS-100

FACTS

Load characteristics	F _{X(N)}	F _{Y(N)}	F _{Y Peak(N)}	F _{Z(N)}	M _{X(Nm)}	M _{Y(Nm)}	M _{Z(Nm)}
LM-053	150	15	158	200	85	70	70



The NEW linear stage **LMS-100** is designed for industrial applications with high speed and limited space conditions such as semiconductor and flat panel display manufacturing. Linear stages **LMS-100** are driven by linear motors and are equipped with a linear scale. The very small height of 30 mm and the width of 100 mm allows very compact setups even for long travel ranges. All linear stages of the **LMS-100** series are equipped with limit switches for protection against damage.



Key features

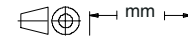
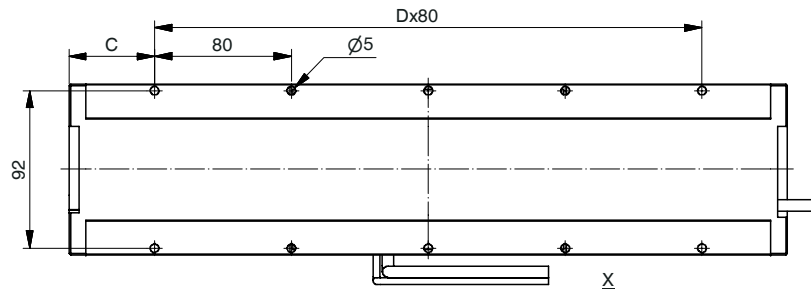
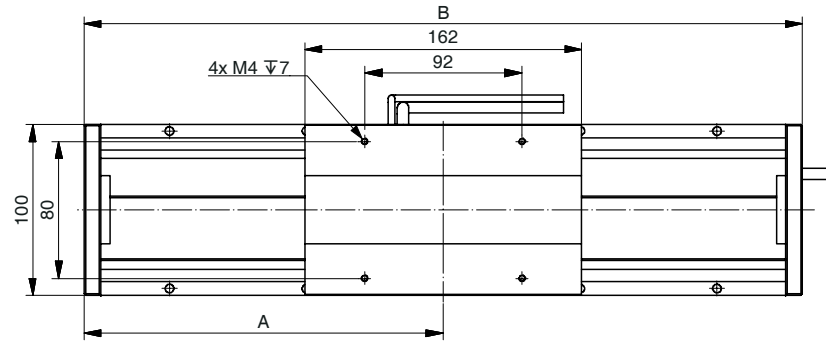
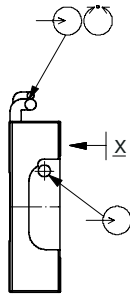
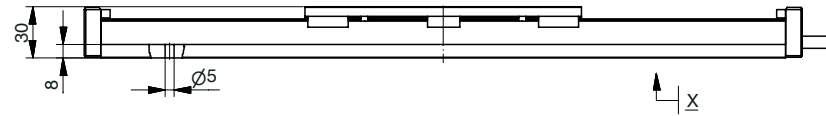
- Linear Motor
- Travel range up to 1000 mm
- Uni-directional repeatability down to 0.1 μm
- Maximum speed 500 mm/sec
- Load capacity up to 20 kg
- Integrated limit switches
- Integrated linear scale (center mounted)

	200	400	600	800	1000
Travel range (mm)	200	400	600	800	1000
<i>Straightness / Flatness (μm)</i>	+/- 3	+/- 5	+/- 7	+/- 9	+/- 11
<i>Pitch (μrad)</i>	+/- 50	+/- 70	+/- 90	+/- 110	+/- 130
<i>Yaw (μrad)</i>	+/- 50	+/- 50	+/- 50	+/- 60	+/- 70
<i>Weight (kg)</i>	5	7	9	11.5	13.5
Motor	LM-053				
Linear scale				LS-070	
<i>Speed max. (mm/sec)</i>	500				
<i>Resolution calculated (μm)</i>				0.015	
<i>Resolution typical (μm)</i>				0.1	
<i>Bi-directional Repeatability (μm)</i>				+/- 0.1	
<i>Uni-directional Repeatability (μm)</i>				0.1	
<i>Nominal Current (A)</i>	0.33				
<i>Accuracy</i>	on request				
<i>Material</i>	Aluminum, black anodized				

Note: FS = full step, RE = rotary encoder
 More info: Detailed information concerning motors and encoders, see appendix.

Linear Motor Stage LMS-100

Travel (mm)	200	400	600	800	1000
A	210	310	410	510	610
B	420	620	820	1020	1220
C	50	30	50	30	50
D	4	7	9	12	14



Order No.	6843-9-				
LM-053	1			
200 mm	1			
400 mm	2			
600 mm	3			
800 mm	4			
1000 mm	5			
LS-070, Linear steel scale	1			
HLS-020, Hall limit switches	1			

USA (East) & CANADA

PI (Physik Instrumente) L.P.
16 Albert St.
Auburn, MA 01501
Tel: +1 (508) 832 3456
Fax: +1 (508) 832 0506
Email: info@pi-usa.us
www.pi-usa.us

USA (West) & MEXICO

PI (Physik Instrumente) L.P.
5420 Trabuco Rd., Suite 100
Irvine, CA 92620
Tel: +1 (949) 679 9191
Fax: +1 (949) 679 9292
Email: info@pi-usa.us
www.pi-usa.us

GERMANY

Headquarters:
PI miCos GmbH
Freiburger Strasse 30
D-79427 Eschbach
GERMANY

Phone: +49 7634 50 57 0
Fax: +49 7634 50 57 393
e-mail: info@pimicos.com
home: www.pimicos.com

**Physik Instrumente (PI)
GmbH & Co. KG**
Auf der Römerstraße 1
76228 Karlsruhe/Palmbach
Tel: +49 (721) 4846-0
Fax: +49 (721) 4846-1019
Email: info@pi.ws
www.pi.ws



Call Us Today
508.832.3456 (East)
949.679.9191 (West)